

CLAVISTER®

 **NetWall**

**THE MOST ROBUST
NEXT-GENERATION
FIREWALLS**



TABLE OF CONTENTS

- 03** Introduction
- 04** Product Highlights
- 09** NetWall 100 Series
- 10** NetWall 300 Series
- 11** NetWall 500 Series
- 12** NetWall 6000 Series
- 13** NetWall 200R Series
- 14** NetWall Virtual Series
- 15** Support Offering
- 16** Licensing Plans
- 17** Technical Specifications
- 25** Hardware Appliance Line-up
- 26** About Clavister



The Most Robust Next-Generation Firewalls

Clavister NetWall is our family of AI-powered Next-Generation Firewalls – designed and developed in Sweden – ideal for cyber-protecting mission-critical infrastructure, including datacentres, remote sites and harsh industrial environments.



SECURITY BY DESIGN

We believe we offer the most robust cybersecurity solutions ever built. We build on 25 years of security track record – the result of a proven secure development lifecycle. The result? Record-few vulnerabilities and unparalleled uptime.



THE SWISS ARMY KNIFE OF ROUTING

With incredibly flexible routing capabilities, Clavister NetWall is designed to support the most complex network setups.

APPLICATION-BASED ROUTING

Efficient routing-decisions made by identification of applications. Allow your mission-critical applications to use the best routes available.

VIRTUAL & DYNAMIC ROUTING

Deploy multiple virtual routers with powerful policy flows. Dynamic routing protocols ensure interoperability with existing network equipment.

ALWAYS-UP PHILOSOPHY

Through a vast range of health monitors, balancing and fail-over methods, your traffic is guaranteed to reach its destination at all times.



PATENTED AI-POWER

Clavister AI capability, the result of years of scientific research, provides instant on-device anomaly detection. Without any cloud dependency, the privacy and confidentiality of your data are preserved.

<15 min
ON-DEVICE
TRAINING

No
CLOUD
PROCESSING

Instant
ANOMALY
DETECTION



**SIMPLE SECURE
REMOTE WORKING**

Clavister OneConnect is our VPN client that offers a simple and easy to use solution for remote access. Connecting securely is as easy as downloading and installing from common marketplaces or distributing using a device management software. Complement with the Clavister IAM solution to benefit from strong authentication and single sign-on capabilities.

SUPPORTED PLATFORMS

Windows

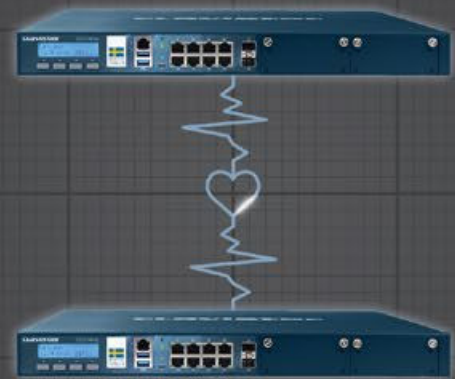
chromeOS

Android

macOS

iPadOS

iOS



**HIGHLY
RESILIENT**

We appreciate the mission-criticality of your network. That is why Clavister NetWall is built to provide the highest level of resiliency. Through our state-of-the-art high availability capability, seamless switch-over to a secondary device happens within milliseconds, without any interruption of traffic. Extensive health checks, not only on the Clavister NetWall device itself but also on links, routes, gateways and even third-party hosts, cater for prompt resolution in case of degradation.

7+ Years

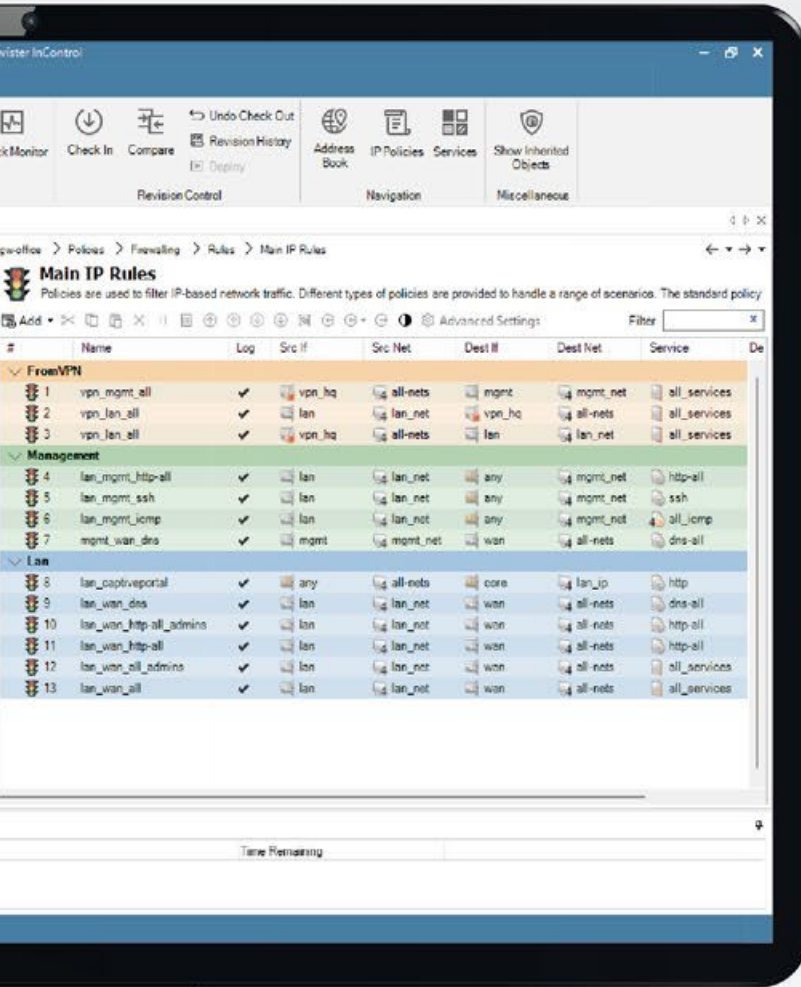
**AVERAGE NUMBER OF YEARS OF
UNINTERRUPTED PROTECTION**



**ACTIONABLE
SECURITY ANALYTICS**

All Clavister NetWall products come with powerful security analytics capabilities. A single pane of glass console provides clear, actionable, and comprehensive evaluation of your organisation's cybersecurity readiness. Through a blend of sophisticated algorithms and real-time insights, the system pinpoints vulnerabilities, prioritises risks, and offers tailored recommendations to keep your business secure.





CENTRAL MANAGEMENT AND CONTROL

The Clavister InControl centralised management console, included in all Clavister NetWall licensing plans, makes managing Clavister NetWall firewalls easy and efficient, even for large networks.

Its intuitive interface simplifies administration through features like zero-touch deployment, shared policy sets, and scheduled firmware updates to simplify day-to-day tasks.

With tools for firewall configuration, troubleshooting, firewall backups, and remote access, Clavister InControl is designed to save time and reduce complexity while keeping your network running smoothly.

Through a granular role and permission structure, Clavister InControl integrates well with your security policy framework.

Full
REVISION
CONTROL

Zero
Touch
DEPLOYMENT

Batch
FIRMWARE
UPGRADES



TRAFFIC MANAGEMENT

The advanced traffic management capability in Clavister NetWall ensures optimised bandwidth usage, enabling smoother network performance even during peak loads. With granular control and intelligent traffic prioritisation, businesses can secure critical applications while maintaining consistent service quality across their infrastructure.



DEEP APPLICATION AWARENESS

In-depth recognition, inspection and control of several thousands of applications allows for the most powerful and granular enforcement of application policies.

SELECTED APPLICATION-BASED CAPABILITIES

Inspection of, and policies for, granular application attributes.

Ensure consistent quality-of-service with effective bandwidth management.

Block or limit undesired or risky applications.

Extensive logging for analytics and auditing.

Apply routing decisions to achieve local internet break-out scenarios.

4,500+

IDENTIFIED APPLICATIONS AND PROTOCOLS



ALWAYS-UP VPN

Clavister NetWall delivers reliable and secure site-to-site VPN capabilities, designed to connect remote locations seamlessly. Built on industry-standard encryption protocols, it ensures excellent interoperability with other VPN solutions, providing secure data transmission across networks. With Clavister's robust IPsec implementation, businesses can count on high performance, ease of configuration, and strong protection for their critical communications. Whether connecting branch offices or integrating with partner networks, Clavister NetWall simplifies secure connectivity while maintaining top-tier security and reliability.



FLEXIBLE DEPLOYMENT OPTIONS

Clavister NetWall is available in a number of models ranging from small desktop versions to large datacenter appliances.

Clavister NetWall is also available on virtualized versions for deployment in public and private cloud environments. Turn key appliances to fit all your needs.

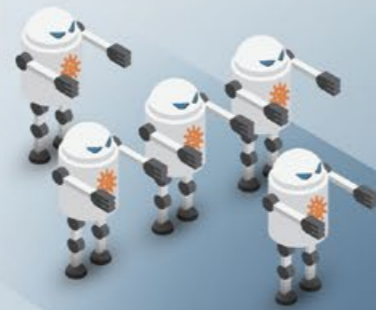


THREAT PREVENTION

Clavister NetWall employs a wide array of sophisticated threat prevention capabilities, all seamlessly integrated with each other, working in concert to provide the most efficient mitigation for a vast range of cyber-attacks.

BOTNET

To conduct large-scale cyberattacks, including Distributed Denial-of-Service (DDoS) attacks and massive spread of malware, hackers typically make use of a botnet – a network of compromised computers or devices. Clavister NetWall mitigates these types of attacks by detecting and blocking botnet Command and Control communication.



PHISHING

Rogue actors frequently attempt to deceive users into sharing sensitive information, such as passwords, credit card numbers or other personal data. This is typically done through fraudulent emails, text messages or fake websites. Clavister NetWall blocks senders of phishing attempts and prevents users from accessing illegitimate websites.



DENIAL-OF-SERVICE (DoS)

A DoS cyberattack aims at disrupting the normal functioning of a network by overwhelming it with a flood of malicious traffic. The goal is to make the targeted resource unavailable, causing downtime, inconvenience, and/or financial loss. Clavister NetWall reduces the impact of DoS attacks using a combination of mitigation technologies.



ILLEGAL AND INAPPROPRIATE CONTENT

Accessing illegal or inappropriate content can be harmful not only from a cybersecurity standpoint but also as a potential violation of business policies. Clavister NetWall provides the safeguards to restrict what type of content users can access.



UNFRIENDLY STATES

Many cyberthreats originate from countries infamous for hosting threat actors or computing resources designated for attacks. Using the geo-fencing capabilities of Clavister NetWall will dramatically reduce the window of attack origin.



VULNERABILITIES AND EXPLOITS

Hackers commonly abuse poorly written software – both on an application and operating system level – to gain unauthorised access to systems, or to simply cause disruptions. Clavister NetWall detects and automatically blocks attempts to exploit known vulnerabilities.



VIRUSES AND OTHER MALWARE

Malware, such as viruses, worms, ransomware and trojans, pose a constant threat to all organisations and can be extremely costly to address once they have gained foothold and begun spreading within a network. Clavister NetWall restricts access to websites known for hosting malware, and can furthermore detect malware in transit to reduce the risk of infection.





| DIMENSIONS & POWER | |
|------------------------------|---|
| Form Factor | Desktop / Wall Mounted |
| Dimensions (H x W x D) | 34 x 131 x 180 mm (1.34 x 5.16 x 7.09 in) |
| Rack Mountable | Yes (Optional) |
| DIN-rail Mountable | Yes (Optional) |
| Maximum Power Consumption | 9.2 Watt |
| Power Supply (AC) | 100-240 VAC, 50-60 Hz |
| Power Supply (DC) | - |
| Redundant Power Supplies | - |
| Hot-swappable Power Supplies | - |

| INTERFACES & MODULES | |
|--------------------------------|----------------|
| Ethernet Interfaces | 4 x 1 GbE RJ45 |
| Power-over-Ethernet Interfaces | - |
| Ethernet Bypass Interfaces | - |
| Console Port | 1 x COM RJ45 |
| Number of Expansion Slots | - |

| OPERATING ENVIRONMENT & CERTIFICATIONS | |
|--|------------------------------|
| Safety | CE, UL |
| EMC | FCC, CE, VCCI |
| Operating & Storage Humidity | 0 % to 95 % (Non-condensing) |
| Operating Temperature | 5°C to 35°C (41°F to 95°F) |

| SYSTEM PERFORMANCE & CAPACITY | NETWALL 110 | NETWALL 140 |
|--|---------------------|---------------------|
| Firewall Throughput (1518 / 512 / 64 byte, UDP) | 1 / 1 / 0.38 Gbps | 4 / 3 / 0.38 Gbps |
| Firewall Throughput (Packets per Second) | 742 Kpps | 742 Kpps |
| Concurrent Connections | 128,000 | 256,000 |
| New Connections/Second (TCP) | 42,000 | 42,000 |
| IPsec VPN Throughput (1420 / 512 / 64 byte, UDP) | 100 / 100 / 73 Mbps | 250 / 250 / 73 Mbps |
| IPsec VPN Throughput (Software Only) (1420 / 512 / 64 byte, UDP) | - | - |
| Gateway-to-Gateway or Roaming IPsec VPN Tunnels | 50 | 100 |
| OneConnect VPN Throughput (TCP) | 100 Mbps | 250 Mbps |
| OneConnect VPN Tunnels | 50 | 100 |
| VLANs | 128 | 128 |
| Virtual Routers | 10 | 20 |





| DIMENSIONS & POWER | |
|------------------------------|---|
| Form Factor | Desktop |
| Dimensions (H x W x D) | 44 x 270 x 160 mm (1.73 x 10.62 x 6.29 in) |
| Rack Mountable | Yes (Included) |
| DIN-rail Mountable | - |
| Maximum Power Consumption | 19.5 Watt |
| Power Supply (AC) | 100-240 VAC, 50-60 Hz |
| Power Supply (DC) | - |
| Redundant Power Supplies | - |
| Hot-swappable Power Supplies | - |

| INTERFACES & MODULES | |
|--------------------------------|-------------------------------|
| Ethernet Interfaces | 6 x 1 GbE RJ45, 2 x 1 GbE SFP |
| Power-over-Ethernet Interfaces | - |
| Ethernet Bypass Interfaces | - |
| Console Port | 1 x COM RJ45 |
| Number of Expansion Slots | - |

| OPERATING ENVIRONMENT & CERTIFICATIONS | |
|--|------------------------------|
| Safety | CE, UL |
| EMC | FCC, CE, VCCI |
| Operating & Storage Humidity | 0 % to 95 % (Non-condensing) |
| Operating Temperature | 5°C to 35°C (41°F to 95°F) |

| SYSTEM PERFORMANCE & CAPACITY | NETWALL 310 | NETWALL 340 |
|--|---------------------|---------------------|
| Firewall Throughput (1518 / 512 / 64 byte, UDP) | 4 / 3.6 / 0.47 Gbps | 8 / 3.6 / 0.47 Gbps |
| Firewall Throughput (Packets per Second) | 923 Kpps | 923 Kpps |
| Concurrent Connections | 500,000 | 1,000,000 |
| New Connections/Second (TCP) | 82,000 | 82,000 |
| IPsec VPN Throughput (1420 / 512 / 64 byte, UDP) | 1 / 1 / 0.2 Gbps | 2 / 1.4 / 0.2 Gbps |
| IPsec VPN Throughput (Software Only) (1420 / 512 / 64 byte, UDP) | - | - |
| Gateway-to-Gateway or Roaming IPsec VPN Tunnels | 500 | 1,000 |
| OneConnect VPN Throughput (TCP) | 250 Mbps | 500 Mbps |
| OneConnect VPN Tunnels | 500 | 1,000 |
| VLANs | 256 | 512 |
| Virtual Routers | 20 | 50 |



| DIMENSIONS & POWER | |
|------------------------------|--|
| Form Factor | Rack Mounted / Desktop |
| Dimensions (H x W x D) | 44 x 251 x 250 mm (173 x 9.88 x 9.84 in) |
| Rack Mountable | Yes (Simple Kit Included) |
| DIN-rail Mountable | - |
| Maximum Power Consumption | 20.7 Watt |
| Power Supply (AC) | 100-240 VAC, 50-60 Hz |
| Power Supply (DC) | - |
| Redundant Power Supplies | Yes (Optional) |
| Hot-swappable Power Supplies | Yes |

| INTERFACES & MODULES | |
|--------------------------------|---|
| Ethernet Interfaces | 6 x 1 GbE RJ45, 2 x 10 GbE SPF+ |
| Power-over-Ethernet Interfaces | Yes <small>(Enable PoE+ on two onboard RJ45 ports using optional PSU)</small> |
| Ethernet Bypass Interfaces | - |
| Console Port | 1 x COM RJ45 |
| Number of Expansion Slots | - |

| OPERATING ENVIRONMENT & CERTIFICATIONS | |
|--|------------------------------|
| Safety | CE, UL |
| EMC | FCC, CE, VCCI |
| Operating & Storage Humidity | 0 % to 95 % (Non-condensing) |
| Operating Temperature | 5°C to 35° C (41°F to 95°F) |

| SYSTEM PERFORMANCE & CAPACITY | NETWALL 510 | NETWALL 550 |
|--|----------------------|----------------------|
| Firewall Throughput (1518 / 512 / 64 byte, UDP) | 10 / 5.7 / 0.72 Gbps | 15 / 5.7 / 0.72 Gbps |
| Firewall Throughput (Packets per Second) | 1.3 Mpps | 1.3 Mpps |
| Concurrent Connections | 1,000,000 | 2,000,000 |
| New Connections/Second (TCP) | 92,000 | 92,000 |
| IPsec VPN Throughput (1420 / 512 / 64 byte, UDP) | 3 / 1.8 / 0.3 Gbps | 5 / 1.8 / 0.3 Gbps |
| IPsec VPN Throughput (Software Only) (1420 / 512 / 64 byte, UDP) | - | - |
| Gateway-to-Gateway or Roaming IPsec VPN Tunnels | 1,000 | 2,000 |
| OneConnect VPN Throughput (TCP) | 500 Mbps | 700 Mbps |
| OneConnect VPN Tunnels | 1,000 | 2,000 |
| VLANs | 512 | 1,024 |
| Virtual Routers | 50 | 100 |

OPTIONAL PREMIUM RACK MOUNT KIT

Upgrade your NetWall 500 Series with this premium rack mount kit, that includes mounting for PSUs.



RACK-500S



| DIMENSIONS & POWER | |
|------------------------------|--|
| Form Factor | Rack Mounted |
| Dimensions (H x W x D) | 44 x 438 x 508 mm (1.73 x 17.24 x 20.00 in) |
| Rack Mountable | Yes (Included) |
| DIN-rail Mountable | - |
| Maximum Power Consumption | 140.3 Watt |
| Power Supply (AC) | 100-240 VAC, 50-60 Hz |
| Power Supply (DC) | 48 VDC (Optional) |
| Redundant Power Supplies | Yes (Optional) |
| Hot-swappable Power Supplies | Yes |

| INTERFACES & MODULES | |
|--------------------------------|---------------------------------------|
| Ethernet Interfaces | 8 x 1 GbE RJ45, 2 x 10 GbE SFP+ |
| Power-over-Ethernet Interfaces | Yes (Using optional Expansion Module) |
| Ethernet Bypass Interfaces | - |
| Console Port | 1 x COM RJ45 |
| Number of Expansion Slots | Two (2) |

| OPERATING ENVIRONMENT & CERTIFICATIONS | |
|--|------------------------------|
| Safety | CE, UL, TUV |
| EMC | FCC, CE, VCCI |
| Operating & Storage Humidity | 0 % to 95 % (Non-condensing) |
| Operating Temperature | 0°C to 40°C (32°F to 104°F) |

| SYSTEM PERFORMANCE & CAPACITY | NETWALL 6200 | NETWALL 6600 |
|--|-------------------------|-------------------------|
| Firewall Throughput (1518 / 512 / 64 byte, UDP) | 20 / 20 / 2.58 Gbps | 50 / 20 / 2.58 Gbps |
| Firewall Throughput (Packets per Second) | 4.7 Mpps | 4.7 Mpps |
| Concurrent Connections | 5,000,000 | 8,000,000 |
| New Connections/Second (TCP) | 300,000 | 300,000 |
| IPsec VPN Throughput (1420 / 512 / 64 byte, UDP) | 5 / 5 / 0.78 Gbps | 15 / 6 / 0.78 Gbps |
| IPsec VPN Throughput (Software Only) (1420 / 512 / 64 byte, UDP) | 1.12 / 0.82 / 0.20 Gbps | 1.12 / 0.82 / 0.20 Gbps |
| Gateway-to-Gateway or Roaming IPsec VPN Tunnels | 2,500 | 5,000 |
| OneConnect VPN Throughput (TCP) | 2 Gbps | 3.5 Gbps |
| OneConnect VPN Tunnels | 2,500 | 5,000 |
| VLANs | 4,096 | 4,096 |
| Virtual Routers | 250 | 500 |

| EXPANSION MODULES | | | | | | |
|-----------------------|---|--|-----------------|-------------------------------------|---|---|
| | | | | | | |
| 8 x 1 GbE RJ45 Copper | 8 x 1 GbE RJ45 SFP <i>No Transceivers Incl</i> | PoE, 8 x 1 GbE RJ45 Copper <i>Incl External 48V PoE PSU</i> | 4 x 10 GbE SFP+ | IPsec Accelerator & 4 x 10 GbE SFP+ | 2 x 25 GbE SFP28 <i>No Transceivers Incl</i> | 2 x 40 GbE QSFP <i>No Transceivers Incl.</i> |
| CM-NET84 | CM-NET85 | CM-POE86 | CM-NET143 | CM-SEC144 | CM-NET220 | CM-NET420 |

200R



| DIMENSIONS & POWER | |
|------------------------------|---|
| Form Factor | DIN-rail Mounted |
| Dimensions (H x W x D) | 150 x 66 x 127 mm (5.9 x 2.6 x 5 in) |
| Rack Mountable | - |
| DIN-rail Mountable | Yes (Included) |
| Maximum Power Consumption | 20 Watt |
| Power Supply (AC) | - |
| Power Supply (DC) | 9 to 36V DC (Typical 12/24V) |
| Redundant Power Supplies | Yes (Optional) |
| Hot-swappable Power Supplies | Yes |

| INTERFACES & MODULES | |
|--------------------------------|-------------------------------|
| Ethernet Interfaces | 4 x 1 GbE RJ45, 2 x 1 GbE SFP |
| Power-over-Ethernet Interfaces | - |
| Ethernet Bypass Interfaces | 2 x 1 GbE RJ45 |
| Console Port | 1 x COM RJ45 |
| Number of Expansion Slots | - |

| OPERATING ENVIRONMENT & CERTIFICATIONS | |
|--|---------------------------------|
| Safety | CE, FCC |
| EMC | FCC, CE |
| Operating & Storage Humidity | 10 % to 95 % |
| Operating Temperature | -40°C to 70°C (-40°F to +158°F) |

| SYSTEM PERFORMANCE & CAPACITY | |
|--|------------------------|
| Firewall Throughput (1518 / 512 / 64 byte, UDP) | 10 / 7 / 1.1 Gbps |
| Firewall Throughput (Packets per Second) | 1.6 Mpps |
| Concurrent Connections | 256,000 |
| New Connections/Second (TCP) | 85,000 |
| IPsec VPN Throughput (1420 / 512 / 64 byte, UDP) | 0,25 / 0,25 / 0,2 Gbps |
| IPsec VPN Throughput (Software Only) (1420 / 512 / 64 byte, UDP) | - |
| Gateway-to-Gateway or Roaming IPsec VPN Tunnels | 100 |
| OneConnect VPN Throughput (TCP) | 250 Mbps |
| OneConnect VPN Tunnels | 100 |
| VLANs | 256 |
| Virtual Routers | 20 |

Virtual



INTERFACES & MODULES

Ethernet interfaces Up to 10

SYSTEM PERF. & CAPACITY

| | 100V | 500V | 1000V | 2000V | 4000V | 6000V | 12000V |
|--|----------|----------|---------|---------|---------|-----------|-----------|
| Firewall Throughput* | 100 Mbps | 500 Mbps | 1 Gbps | 2 Gbps | 4 Gbps | 6 Gbps | 12 Gbps |
| Concurrent Connections | 16,000 | 64,000 | 128,000 | 256,000 | 512,000 | 1,000,000 | 1,000,000 |
| IPsec VPN Throughput (1420 / 512 / 64 byte, UDP) | 100 Mbps | 500 Mbps | 1 Gbps | 2 Gbps | 4 Gbps | 6 Gbps | 12 Gbps |
| Gateway-to-Gateway or Roaming IPsec VPN Tunnels | 50 | 250 | 500 | 500 | 1,000 | 1,500 | 1,500 |
| OneConnect VPN Tunnels | 50 | 250 | 500 | 500 | 1,000 | 1,500 | 1,500 |
| VLANs | 1024 | 1024 | 1024 | 1024 | 1024 | 1024 | 1024 |
| Virtual Routers | 25 | 25 | 50 | 50 | 100 | 100 | 125 |

VIRTUALIZATION SPECIFICATIONS

| | | | | | | | |
|----------------------------------|--|--------|--------|------|------|------|------|
| Supported Hypervisors | VMware vSphere, KVM (ARM & Intel), Microsoft Hyper-V | | | | | | |
| Intel AES-NI Crypto Acceleration | Yes | | | | | | |
| Intel DPDK and SR-IOV Support | Yes | | | | | | |
| Recommended Available Storage | 1 GB | | | | | | |
| Minimum Recommended RAM | 512 MB | 512 MB | 512 MB | 1 GB | 2 GB | 4 GB | 4 GB |

NO. OF vCPU SUPPORTED 32-BIT IMG (x86) 64-BIT IMG (x86_64) 64-BIT IMG (ARMv8) COMMENT

| | | | | |
|--------|---|---|---|--|
| 1 vCPU | • | • | • | 32-bit image: The image will run in interrupt mode 64-bit image: The image can run in either interrupt mode or polling mode |
| 2 vCPU | | • | • | The image will run in polling mode |
| 3 vCPU | | • | | The image will run in polling mode and use one vCPU for interface offloading |
| 4 vCPU | | • | • | The image will run in polling mode and use one vCPU for AI Processing |

* Actual performance depends on host/server-hardware, hypervisor and similar.

Support Offering

Our multi-tiered model, Standard and Priority Support, provides tailored service levels to meet your needs. From technical assistance to 24/7 emergency support, we ensure reliable solutions for your business.



STANDARD SUPPORT

Included, without extra cost, for all customers with an active Licensing Plan.

Technical Support

via helpdesk at my.clavister.com

Technical Documentation

including Knowledge Base

Standard Availability

08:00–17:00 CET
(Swedish office hours)

English and Swedish

as supported languages



PRIORITY SUPPORT

Available for customers with an active subscription and a Priority Support Agreement.

STANDARD SUPPORT



Emergency Availability 24/7/365

When production network is down or is severely degraded in performance, functionality or management

Callback Option

Callback request via support ticket

SupportOps

10 h/year included

SUPPORT OPS

SupportOps is a personalised complement to Standard Support, designed to address specific needs efficiently. Whether you need help with configuration, design advice, or resolving an issue, our experts provide hands-on assistance. Sessions are scheduled promptly and are available to all partners and customers, regardless of support tier, at an hourly rate.

Licensing Plans

We offer flexible licensing plans, designed to meet diverse business needs. Each plan unlocks powerful features and tools, ensuring your Clavister NetWall product is optimised for performance, protection, and scalability.

| | ★ ESSENTIALS | ★★ ENHANCED | ★★★ PREMIUM |
|--------------------------------------|-----------------|----------------|----------------|
| Support and Maintenance | | | |
| Standard Support | • | • | • |
| Software Maintenance | • | • | • |
| Hardware Replacement | • | • | • |
| Networking Capabilities | | | |
| Routing | • | • | • |
| Always-Up VPN | • | • | • |
| Traffic Management | • | • | • |
| Simple Secure Remote Networking | • | • | • |
| High Availability | • | • | • |
| Management and Analytics | | | |
| Centralised Management | • | • | • |
| Security Analytics | • | • | • |
| Threat Prevention | | | |
| Firewalling | • | • | • |
| Deep Application Awareness | • | • | • |
| Intrusion Prevention | | • | • |
| Anti Malware | | • | • |
| Web Content Filtering | | • | • |
| Geo-fencing | | • | • |
| IP Reputation | | • | • |
| SSL Inspection | | | |
| SSL Inspection with Clavister NetEye | | | • |
| Cloud Sandboxing | | | • |

Technical Specifications

| FIREWALL | |
|---|---|
| Stateful Firewall / Deep Packet Inspection | Yes / Yes |
| IP Policies | ALLOW, DROP and REJECT |
| Security Zones | Yes |
| Multiple IP Rule-sets | Yes |
| User- and Group-based Filter in Policies | Yes |
| Time- and Date-based Scheduled Policies | Yes |
| DoS and DDoS Detection and Prevention | Yes |
| Threshold Rules (Connection Count and Rate Limits) for IPv4 | Yes |
| IP Blacklisting / Whitelisting for IPv4 | Yes / Yes |
| TCP Sequence Number Tracking | Yes |
| FQDN- and Wildcard FQDN Address Filter in IP Policies | Yes |
| IP Geolocation Filter in IP Policies | Yes |
| DOS Protection based on IP Geolocation Filter for IPv4 | Yes |
| Ingress Filtering / IP Spoofing Protection | |
| Access Rules | Yes |
| Strict Reverse Path Forwarding (RPF) | Yes |
| Feasible RPF by using Interface Equivalence | Yes |
| Address and Port Translation for IPv4 | |
| Policy-Based | Yes |
| Dynamic NAT (Source) | Yes |
| Symmetric NAT | Yes |
| NAT Pools | Yes |
| Static Source Translation | Yes |
| Static Destination Translation (Virtual IP/ Port forward) | Yes |
| NAT Hairpinning | Yes |
| Reverse Proxy for IPv4 | |
| Protocol | HTTP, HTTPS |
| IP Blacklisting | Yes |
| SERVER LOAD BALANCING (SLB) FOR IPv4 | |
| SLB Distribution Methods | Round-Robin, Connection-Rate, Strict, Server Resource-Usage over REST API |
| SLB Monitoring Methods | ICMP Echo, Custom TCP Port, HTTP Request/Response |
| SLB Server Stickiness | State, IP Address, Network |
| SLB Maintenance Mode | Yes |
| SLB Server Fallback | Yes |
| CONNECTIVITY | |
| Ethernet Interfaces | 1GbE, 2.5GbE, 10GbE, 25GbE, 40GbE |
| Link Aggregation IEEE 802.1AX-2008 (Static / LACP) | Yes |
| VLAN Interfaces IEEE 802.1Q | Yes |
| Service-VLAN Interfaces IEEE 802.1ad (Q-in-Q) | Yes |

MODES OF OPERATIONS

| | |
|------------------------------------|-----|
| Transparent Mode (Layer 2) | Yes |
| Routing Mode (Layer 3) | Yes |
| Mixed Transparent and Routing Mode | Yes |

ROUTING

| | |
|---|--|
| Static Routing | Yes |
| Policy-Based Routing (PBR) | Yes |
| Scheduled Policy-Based Routing | Yes |
| Virtual Routing | Yes |
| Multiple Routing Tables | Yes |
| Loopback Interfaces | Yes |
| Route Load Balancing (Equal-Cost Multipath) | Yes |
| Route Failover | Yes |
| Route Monitoring Methods | ARP, ICMP Echo, Custom TCP Port, HTTP Request / Response |
| Source-Based Routing | Yes |
| Path MTU Discovery | Yes |

Dynamic Routing

| | |
|------------------------------------|---------------|
| Policy-Based Dynamic Routes | Yes |
| OSPFv2 Routing Process (RFC2328) | Yes, Multiple |
| OSPFv2 RFC 1583 Compatibility Mode | Yes |
| OSPFv2 over VPN | Yes |

Application-based Routing

| | |
|------------------------------|-----|
| Routing based on application | Yes |
|------------------------------|-----|

Multicast for IPv4

| | |
|-------------------------------------|-----|
| Multicast Forwarding | Yes |
| IGMPv2 Compatibility Mode (RFC2236) | Yes |
| IGMPv3 (RFC3376) | Yes |
| IGMP Proxy Mode | Yes |
| IGMP Snoop Mode | Yes |

Transparent Mode (L2 Bridge Mode)

| | |
|--|--|
| Policy-Based | Yes |
| MPLS Pass-through | Yes |
| DHCP Pass-through | Yes |
| Layer 2 Pass-through of Non-IP Protocols | Yes |
| Spanning Tree BPDU Relaying | Normal (STP), Rapid (RSTP), Multiple (MSTP), Per VLAN Spanning Tree Plus (PVST+) |

Disclaimer: This is a general overview of all the features; for an updated feature list always refer to the latest NetWall documentation for your product.

INTERFACE IP ADDRESS ASSIGNMENT

| | |
|---|----------------------------------|
| Static IPv4 Address Assignment | Yes |
| Static IPv6 Address Assignment | Yes |
| DHCPv4 Client | Ethernet, VLAN, Link-Aggregation |
| DHCPv6 Client | Ethernet, VLAN, Link-Aggregation |
| IPv6 Prefix Delegation | Ethernet, VLAN, Link-Aggregation |
| PPPoE IPv4 Client | Ethernet, VLAN, Link-Aggregation |
| PPPoE IPv6 Client | Ethernet, VLAN, Link-Aggregation |
| Stateless IPv6 Address Auto-configuration | Yes |
| IPv6 Router Solicitation | Yes |
| PPTP / L2TP IPv4 Client | Yes |

SPECIFIC IPv6 PROTOCOL FEATURES

| | |
|---------------------------|--------------------------------|
| IPv6 Ready Certification | Core Protocols, Phase-2 Router |
| Neighbor Discovery | Yes |
| Proxy Neighbor Discovery | Yes |
| IPv6 Router Advertisement | Yes |

NETWORK SERVICES

| | |
|-------------------------------|-------------------------------|
| DHCPv4 Server | Yes, Multiple |
| DHCPv4 Server Custom Options | Yes |
| DHCPv4 Relay | Yes, Multiple |
| DHCPv6 Server | Yes, Multiple |
| IP Pool | Yes |
| Proxy ARP | Yes |
| Dynamic DNS Services for IPv4 | Dyn.com, Dyns.cx, DuckDNS.org |
| Custom HTTP Poster for IPv4 | Yes |

BANDWIDTH MANAGEMENT FOR IPv4

| | |
|--|-------------|
| Policy-Based Bandwidth Management | Yes |
| Scheduled Policies | Yes |
| Bandwidth Guarantees | Yes |
| Bandwidth Limits | Yes |
| Bandwidth Prioritization | Yes |
| DSCP-based / ToS-based | Yes |
| Bandwidth Management per Group | Yes |
| Dynamic Bandwidth Balancing between Groups | Yes |
| Packet Rate Limits | Yes |
| DSCP Forwarding | Yes |
| DSCP Copy to Outer Header | VLAN, IPsec |

APPLICATION CONTROL

| | |
|---|-----------------------------------|
| Recognizable Applications | 4,500+ |
| Application Content Control | 5,700+ |
| Policy-Based | Yes |
| Policy Matching on Application | Yes |
| Policy Matching on Application Content (Metadata) | Yes |
| Policy Actions | Audit, DROP, Bandwidth Management |

INTRUSION DETECTION AND PREVENTION (IDS / IPS)

| | |
|-------------------------------------|-----------------------------------|
| Policy-Based | Yes |
| Signature Selection per Policy | Yes |
| Policy Actions | Audit, DROP, Bandwidth Management |
| Stateful Pattern Matching | Yes |
| Protocol and Rate Anomaly Detection | Yes |
| Insertion and Evasion Protection | Yes |
| Dynamic IP Blacklisting for IPv4 | Yes |
| Automatic Signature Updates | Yes |

IP REPUTATION FOR IPv4

| | |
|--------------------------------|-----|
| Real-Time DoS Protection | Yes |
| Real-Time Botnet Protection | Yes |
| Real-Time Phishing Protection | Yes |
| Real-Time Scanner Protection | Yes |
| Real-Time SPAM Protection | Yes |
| Real-Time IP Reputation Scores | Yes |

CONTENT SECURITY

| | |
|--------------------------|--|
| Policy-Based | Yes |
| IPv4 Protocol Validation | HTTP, HTTPS, FTP, SMTP, POP3, IMAP, TFTP, SIP, H.323, PPTP, TLS/SSL, DNS, Syslog |
| IPv6 Protocol Validation | HTTP, HTTPS |

Web Content Filtering

| | |
|---------------------------------------|-----------|
| HTTP / HTTPS | Yes / Yes |
| Audit / Blocking Mode | Yes / Yes |
| Classification Categories | 86 |
| URL Whitelisting / Blacklisting | Yes / Yes |
| Customizable Restriction Pages | Yes |
| Cloud-Based URL Classification Source | Yes |
| User-Agent Filter | Yes |

Anti-Virus

| | |
|--|-----------------------------|
| Supported Protocols | HTTP, FTP, SMTP, POP3, IMAP |
| Stream-Based Scanning | Yes |
| File Type Whitelisting | Yes |
| Scanning of Files in Archives (ZIP / GZIP) | Yes |
| Nested Archives Support (ZIP / GZIP) | Yes, Up to 10 Levels |
| Automatic Signature Updates | Yes |

Anti-Spam

| | |
|---------------------|------------------|
| Supported Protocols | SMTP, POP3, IMAP |
|---------------------|------------------|

Anti-Spam Detection Mechanisms

| | |
|---|------------------|
| Reply Address Domain Verification | SMTP, POP3, IMAP |
| Malicious Link Protection | SMTP, POP3, IMAP |
| Distributed Checksum Clearinghouses (DCC) | SMTP, POP3, IMAP |
| DNS Blacklisting | SMTP, POP3, IMAP |

Disclaimer: This is a general overview of all the features; for an updated feature list always refer to the latest NetWall documentation for your product.



Anti-Spam Actions

| | |
|-----------------------------------|------------------|
| Strip Malicious Links | SMTP, POP3, IMAP |
| Tag Subject and Headers | SMTP, POP3, IMAP |
| Send to Quarantine E-mail Address | SMTP |
| E-mail Rate Limiting | SMTP |
| Reject Email Reception | SMTP |

File Integrity

| | |
|---|-----------------------------|
| Supported Protocols | HTTP, FTP, SMTP, POP3, IMAP |
| File Type Whitelisting / Blacklisting | Yes / Yes |
| File Extension and MIME Type Verification | Yes |

Update Center

| | |
|-----------------------------|-----------------------------------|
| Scheduled Signature Updates | Hourly / Daily / Weekly / Monthly |
| Manual Signature Updates | Yes |
| HTTP / HTTPS Proxy Support | Yes |

APPLICATION LAYER GATEWAY

| | |
|--------------------------------------|----------------------------------|
| HTTP / HTTPS (Content Security) | Yes |
| FTP (Content Security, NAT / SAT) | Yes |
| TFTP (NAT / SAT) | Yes |
| SIP (NAT / SAT) | Yes |
| Syslog | Yes |
| H.323 / H.323 Gatekeeper (NAT / SAT) | Yes |
| SMTP (Content Security) | Yes |
| POP3 (Content Security) | Yes |
| IMAP (Content Security) | Yes, Using Email Control Profile |
| SSL / TLS (Offloading) | Yes |
| PPTP (Passthrough, NAT / SAT) | Yes |
| DNS | Yes |

VPN TUNNELS

IPsec VPN

| | |
|-------------------------------------|--|
| Internet Key Exchange | IKEv1, IKEv2 |
| IKEv1 Phase 1 | Main Mode, Aggressive Mode |
| IKEv1 Phase 2 | Quick Mode |
| IPsec Modes | Tunnel, Transport (IKEv1 Only) |
| IKE Encryption | AES-GCM, AES, 3DES, DES, Blowfish, Twofish, Cast-128 |
| IPsec Encryption | AES-GCM, AES, 3DES, DES, Blowfish, Twofish, Cast-128, NULL |
| AES Key Size | 128, 192, 256 |
| IKE / IPsec Authentication | SHA-1, SHA-256, SHA-512, MD-5, AES-XCBC (IKEv2 Only) |
| Perfect Forward Secrecy (DH Groups) | 1, 2, 5, 14, 15, 16, 17, 18, 19, 20, 21, 28, 29, 30, 31 |
| IKE Config Mode | Yes, Static Pool and RADIUS Assigned IP |
| IKE DSCP Assignment | Static |
| Dead Peer Detection (DPD) | Yes |
| Pre-Shared Keys (PSK) | Yes |
| X.509 Certificates | Yes |
| XAuth (IKEv1) | Yes, Client and Server |
| EAP (IKEv2) | Client (EAP-MSCHAPv2, EAP-MD5) Server (EAP-MSCHAPv2, EAP-MD5, RADIUS) |
| PKI Certificate Requests | PKCS#1, PKCS#3, PKCS#7, PKCS#10 |
| Self-Signed Certificates | Yes |

| | |
|---|--|
| Certificate Authority Issued Certificates | Yes, VeriSign, Entrust etc. |
| Certificate Revocation List (CRL) Protocols | LDAP, HTTP |
| CRL Fail-Mode Behaviour | Conditional, Enforced |
| IKE Identity | IP, FQDN, E-mail, X.500 Distinguished-Name |
| Security Association Granularity | Net, Host, Port |
| Replay Attack Prevention | Yes |
| Policy-Based Routing | Yes |
| Virtual Routing | Yes |
| Roaming Client Tunnels | Yes |
| NAT Traversal (NAT-T) | Yes |
| MOBIKE | Yes |
| IPsec Dial-on-Demand | Yes |
| IPsec Tunnel Selection Through | Firewall Rule Set, Routing, Policy-Based Routing |
| Redundant VPN Tunnels | Yes |
| IPsec Passthrough | Yes |
| Tunneling of IPv4 in IPv4 IPsec Tunnel | Yes |
| Tunneling of IPv4 in IPv6 IPsec Tunnel | Yes |
| Tunneling of IPv6 in IPv4 IPsec Tunnel | Yes |
| Tunneling of IPv6 in IPv6 IPsec Tunnel | Yes |
| OneConnect SSL VPN | |
| TLS (TCP) Support | Yes |
| DTLS (UDP) Support | Yes |
| One-Time Client Installation | Yes |
| Multi-factor Authentication (MFA/2FA) Support | OpenID Connect (OIDC), RADIUS |
| Browser Independent | Yes |
| VPN Policy Selection Through | Firewall Rule Set, Routing, Policy-Based Routing |
| Split Tunneling | Yes |
| SSL VPN Client IPv4 Provisioning | IP Pool, Static |
| Client OS Support | Windows, macOS, iPadOS, iOS, Android |
| L2TP VPN | |
| L2TPv2 Client (LAC) | Yes |
| L2TPv2 Server (LNS) | Yes |
| L2TPv3 Client (LAC) | Yes |
| L2TPv3 Server (LNS) | Yes |
| L2TP over IPsec | Yes |
| L2TP Tunnel Selection Through | Firewall Rule Set, Routing, Policy-Based Routing |
| L2TP Client Dial-on-Demand | Yes |
| L2TPv2 Server IPv4 Provisioning | IP Pool, Static |
| Other Tunnels | |
| PPPoE IPv4 Client | Yes |
| PPPoE IPv6 Client | Yes |
| Unnumbered PPPoE | Yes |
| PPPoE Client Dial-on-Demand | Yes |
| PPTP Client (PAC) | Yes |
| PPTP Client Dial-on-Demand | Yes |
| PPTP Server (PNS) | Yes |
| PPTP Server IP Provisioning | IP Pool, Static |
| MPPE Encryption (PPTP / L2TP) | RC4-40, RC4-56, RC4-128 |
| Generic Routing Encapsulation, GRE (RFC2784, RFC2890) | Yes |
| 6in4 Tunneling (RFC4213) | Yes |
| Tunnel Selection Through | Firewall Rule Set, Routing, Policy-Based Routing |

Disclaimer: This is a general overview of all the features, for an updated feature list always refer to the latest NetWall documentation for your product.

USER AUTHENTICATION

| | |
|---|---------------------------------------|
| Local User Database | Yes, Multiple |
| OpenID Connect (OIDC) Authentication | Yes, Multiple Servers, for OneConnect |
| RADIUS Authentication | Yes, IPv4 / IPv6, Multiple Servers |
| RADIUS Accounting | Yes, IPv4 / IPv6, Multiple Servers |
| LDAP Authentication | Yes, Multiple Servers |
| RADIUS Authentication Protocols | PAP, CHAP, MS-CHAPv1, MS-CHAPv2 |
| XAUTH IKEv1 / IPsec Authentication | Yes |
| EAP IKEv2 / IPsec Authentication | Yes |
| Web-Based HTTP / HTTPS Authentication | Yes |
| Customizable HTTP / HTTPS Portal | Yes |
| L2TP / PPTP / OneConnect / SSL VPN Authentication | Yes |

Identity Awareness

| | |
|---|--------------------------|
| Device-Based Authentication (MAC Address) | Yes |
| ARP Authentication | Yes |
| RADIUS Relay | Yes |
| Active Directory Integration | Microsoft Windows Server |
| Client-less Deployment | Yes |

MANAGEMENT

| | |
|-----------------------------------|---|
| Centralized Management | Clavister InControl |
| Web User Interface (WebUI) | HTTP and HTTPS |
| SSH Management | Yes |
| Command Line Interface (CLI) | Yes |
| REST API | User Authentication, SLB, Blacklist Control |
| Management Authentication | Local User Database, RADIUS |
| Management Brute Force Protection | Yes |
| Remote Fail-Safe Configuration | Yes |
| Local Console (RS-232) | Yes |
| Traffic Simulation (CLI) | ICMP, TCP, UDP |
| Scripting Support | CLI, WebUI |
| Packet Capture (PCAP) | Yes |
| Packet Capture (PCAP) | WebUI, InControl, SCP |
| System and Configuration Backup | WebUI, InControl, SCP |
| SNTP Time Sync | Yes |

MONITORING AND LOGGING

| | |
|---------------------------------------|---|
| Syslog | Yes, Multiple Servers |
| Clavister InControl Log | Yes, Multiple Servers |
| Real-Time Log | CLI, WebUI, InControl |
| Memory Log | CLI, WebUI |
| Mail Alerting | Yes, SMTP |
| Log Settings per Policy | Yes |
| Log Export via WebUI | Yes |
| SNMPv2c Polling / Traps | Yes / Yes |
| SNMPv3 Polling / Traps | Yes / Yes |
| Real-Time Monitor Alerts (Log action) | Yes |
| Real-Time Performance Monitoring | WebUI, InControl |
| Hardware Key Metrics Monitoring | CPU Load, CPU Temperature, Voltage, Memory, Fan etc |

| HIGH AVAILABILITY | |
|---|-----------------|
| Active Node with Passive Backup | Yes |
| Firewall Connection State Synchronization | Yes |
| IKE / IPsec State Synchronization | Yes / Yes |
| User and Accounting State Synchronization | Yes |
| DHCP Server and Relay State Synchronization | Yes |
| DHCP Client | Yes |
| Synchronization of Dynamic Routes | Yes |
| IGMP State Synchronization | Yes |
| Server Load Balancing (SLB) State Synchronization | Yes |
| Configuration Synchronization | Yes |
| Device Failure Detection | Yes |
| Dead Link / Gateway / Interface Detection | Yes / Yes / Yes |
| Average Failover Time | < 800 ms |

| HYPERVISOR SUPPORT | |
|--------------------|-----|
| VMware | Yes |
| KVM | Yes |
| Hyper-V | Yes |

| EASY DEPLOYMENT | |
|----------------------|--------------------|
| Clavister Zero Touch | Yes |
| Cloud Init | Yes, Network Based |

| ACME (AUTOMATIC CERTIFICATE MANAGEMENT ENVIRONMENT) | |
|---|-----|
| Let's Encrypt | Yes |
| Buypass | Yes |
| Custom Server | Yes |

Disclaimer: This is a general overview of all the features; for an updated feature list always refer to the latest NetWall documentation for your product.

Hardware Appliance Line-up



| SYSTEM | | | | | |
|------------------------------|---|--|---|---|--------------------------------------|
| Form Factor | Desktop / Wall Mounted | Desktop | Rack Mounted / Desktop | Rack Mounted | DIN-rail Mounted |
| Dimensions (H x W x D) | 34 x 131 x 180 mm (1.34 x 5.16 x 7.09 in) | 44 x 270 x 160 mm (1.73 x 10.62 x 6.29 in) | 44 x 251 x 250 mm (1.73 x 9.88 x 9.84 in) | 44 x 438 x 508 mm (1.73 x 17.24 x 20.00 in) | 150 x 66 x 127 mm (5.9 x 2.6 x 5 in) |
| Rack Mountable | Yes (Optional) | Yes (Included) | Yes (Simple Kit Included) | Yes (Included) | - |
| DIN-rail Mountable | Yes (Optional) | - | - | - | Yes (Included) |
| Maximum Power Consumption | 9.2 Watt | 19.5 Watt | 20.7 Watt | 140.3 Watt | 20 Watt |
| Power Supply (AC) | 100-240 VAC, 50-60 Hz | 100-240 VAC, 50-60 Hz | 100-240 VAC, 50-60 Hz | 100-240 VAC, 50-60 Hz | - |
| Power Supply (DC) | - | - | - | 48 VDC (Optional) | 9 to 36V DC (Typical 12/24V) |
| Redundant Power Supplies | - | - | Yes (Optional) | Yes (Optional) | Yes (Optional) |
| Hot-swappable Power Supplies | - | - | Yes | Yes | Yes |

| INTERFACES & MODULES | | | | | |
|--------------------------------|----------------|-------------------------------|--|---------------------------------------|-------------------------------|
| Ethernet Interfaces | 4 x 1 GbE RJ45 | 6 x 1 GbE RJ45, 2 x 1 GbE SFP | 6 x 1 GbE RJ45, 2 x 10 GbE SFP+ | 8 x 1 GbE RJ45, 2 x 10 GbE SFP+ | 4 x 1 GbE RJ45, 2 x 1 GbE SFP |
| Power-over-Ethernet Interfaces | - | - | Yes (Enable PoE+ on two onboard RJ45 ports using optional PSU) | Yes (Using optional Expansion Module) | - |
| Ethernet Bypass Interfaces | - | - | - | - | 2 x 1 GbE RJ45 |
| Console Port | 1 x COM RJ45 | 1 x COM RJ45 | 1 x COM RJ45 | 1 x COM RJ45 | 1 x COM RJ45 |
| Number of Expansion Slots | - | - | - | Two (2) | - |

| OPERATING ENVIRONMENT & CERTIFICATIONS | | | | | |
|--|------------------------------|------------------------------|------------------------------|------------------------------|---------------------------------|
| Safety | CE, UL | CE, UL | CE, UL | CE, UL, TUV | CE, FCC |
| EMC | FCC, CE, VCCI | FCC, CE, VCCI | FCC, CE, VCCI | FCC, CE, VCCI | FCC, CE |
| Operating & Storage Humidity | 0 % to 95 % (Non-condensing) | 0 % to 95 % (Non-condensing) | 0 % to 95 % (Non-condensing) | 0 % to 95 % (Non-condensing) | 10 % to 95 % |
| Operating Temperature | 5°C to 35°C (41°F to 95°F) | 5°C to 35°C (41°F to 95°F) | 5°C to 35°C (41°F to 95°F) | 0°C to 40°C (32°F to 104°F) | -40°C to 70°C (-40°F to +158°F) |

| SYSTEM PERFORMANCE & CAPACITY | NETWALL 110 | NETWALL 140 | NETWALL 310 | NETWALL 340 | NETWALL 510 | NETWALL 550 | NETWALL 6200 | NETWALL 6600 | NETWALL 200R |
|--|---------------------|---------------------|---------------------|---------------------|----------------------|----------------------|-------------------------|-------------------------|------------------------|
| Firewall Throughput (1518 / 512 / 64 byte, UDP) | 1 / 1 / 0.38 Gbps | 4 / 3 / 0.38 Gbps | 4 / 3.6 / 0.47 Gbps | 8 / 3.6 / 0.47 Gbps | 10 / 5.7 / 0.72 Gbps | 15 / 5.7 / 0.72 Gbps | 20 / 20 / 2.58 Gbps | 50 / 20 / 2.58 Gbps | 10 / 7 / 1.1 Gbps |
| Firewall Throughput (Packet per Second) | 742 Kpps | 742 Kpps | 923 Kpps | 923 Kpps | 1.3 Mpps | 1.3 Mpps | 4.7 Mpps | 4.7 Mpps | 1.6 Mpps |
| Concurrent Connections | 128,000 | 256,000 | 500,000 | 1,000,000 | 1,000,000 | 2,000,000 | 5,000,000 | 8,000,000 | 256,000 |
| New Connections/Second (TCP) | 42,000 | 42,000 | 82,000 | 82,000 | 92,000 | 92,000 | 300,000 | 300,000 | 85,000 |
| IPsec VPN Throughput (1420 / 512 / 64 byte, UDP) | 100 / 100 / 73 Mbps | 250 / 250 / 73 Mbps | 1 / 1 / 0.2 Gbps | 2 / 1.4 / 0.2 Gbps | 3 / 1.8 / 0.3 Gbps | 3 / 1.8 / 0.3 Gbps | 5 / 5 / 0.78 Gbps | 15 / 6 / 0.78 Gbps | 0,25 / 0,25 / 0,2 Gbps |
| IPsec VPN Throughput (Software Only) (1420 / 512 / 64 byte, UDP) | - | - | - | - | - | - | 1.12 / 0.82 / 0.20 Gbps | 1.12 / 0.82 / 0.20 Gbps | - |
| Gateway-to-Gateway or Roaming IPsec VPN Tunnels | 50 | 100 | 500 | 1,000 | 1,000 | 2,000 | 2,500 | 5,000 | 100 |
| OneConnect VPN Throughput (TCP) | 100 Mbps | 250 Mbps | 250 Mbps | 500 Mbps | 500 Mbps | 700 Mbps | 2 Gbps | 3.5 Gbps | 250 Mbps |
| OneConnect VPN Tunnels | 50 | 100 | 500 | 512 | 1,000 | 2,000 | 2,500 | 5,000 | 100 |
| VLANs | 128 | 128 | 256 | 512 | 512 | 1,024 | 4,096 | 4,096 | 256 |
| Virtual Routers | 10 | 20 | 20 | 50 | 50 | 100 | 250 | 500 | 20 |

On a Mission to Cyber-Protect Europe

Clavister provides top-tier cybersecurity solutions made in Sweden.
For over 25 years, we are the trusted partner for customers
with mission-critical applications.

YOUR TRUSTED PARTNER

In today's rapidly evolving cyber threat environment, everyone needs all the help they can get – but who do you trust? With over 20,000 satisfied customers and 25 years of innovation, Clavister has proven itself as the reliable choice, trusted by major brands and recognised for our strong partnerships.

SWEDISH ENGINEERING AT HEART

Clavister's solutions are rooted in the strong tradition of Swedish engineering, known for reliability, quality, and cutting-edge innovation. We believe we offer the most robust cyber security solutions, built on long-standing security expertise, resulting in record-low vulnerabilities and unparalleled uptime. Our commitment to innovation keeps us at the forefront of the industry.

A CARING RELATIONSHIP

At Clavister, cybersecurity is a team game. That's why we focus on building long-term relationships where you engage directly with our domain experts. Our presence in Europe includes a dedicated team and a strong reseller network, ready to support you. We've got you covered!

TRUSTED BY MAJOR BRANDS

MUSTANG®

NOKIA

BAE SYSTEMS



SAAB

ERICSSON



CLAVISTER®

CLAVISTER.COM